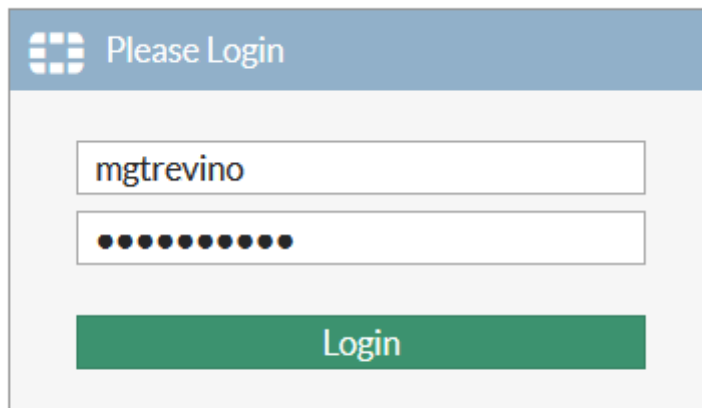


Installing, Configuring and Using Fortinet VPN Client

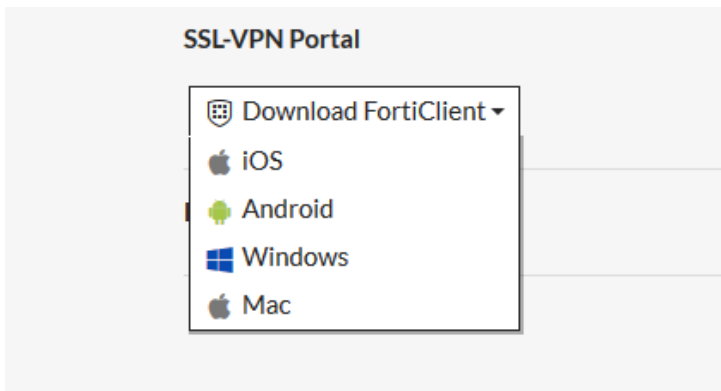


Installation

1. Download the appropriate version of FortiClient (available for PC and Mac) <https://swtjc-fw01.swtjc.edu> by logging in with your SWTJC username and password:

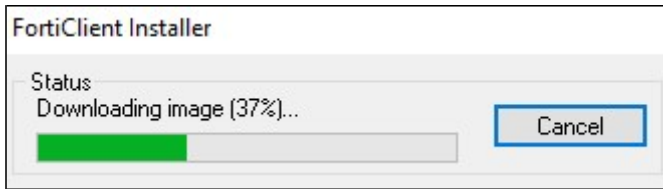


2. On next page click drop down under SSL-VPN Portal and choose Windows if using Windows PC or laptop:

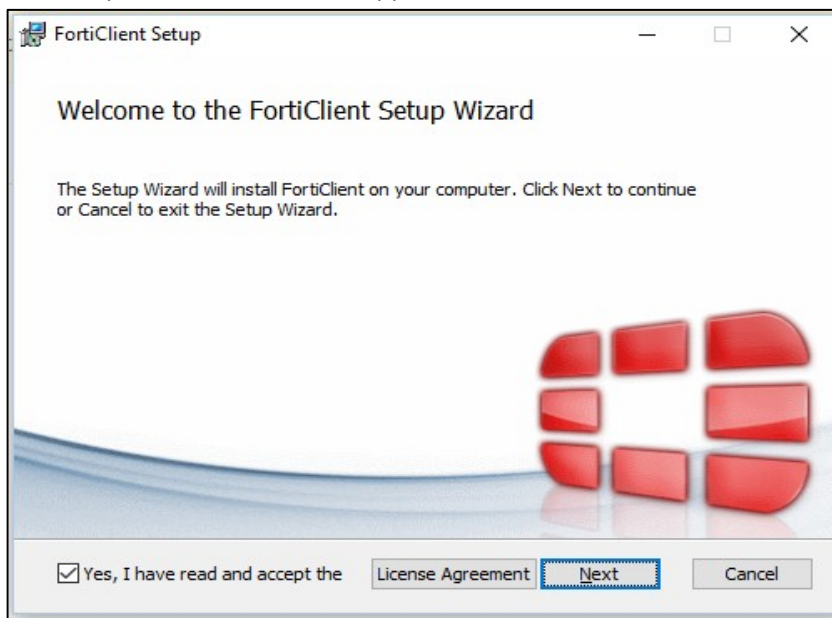


3. When prompted to Run or Save the file, select **Save**. After the file downloads, either click Run (if asked) or locate the file where you saved it and double-click to Run
3. Select Yes or OK if prompted to allow the program to run or make changes
4. The following Installer window will appear

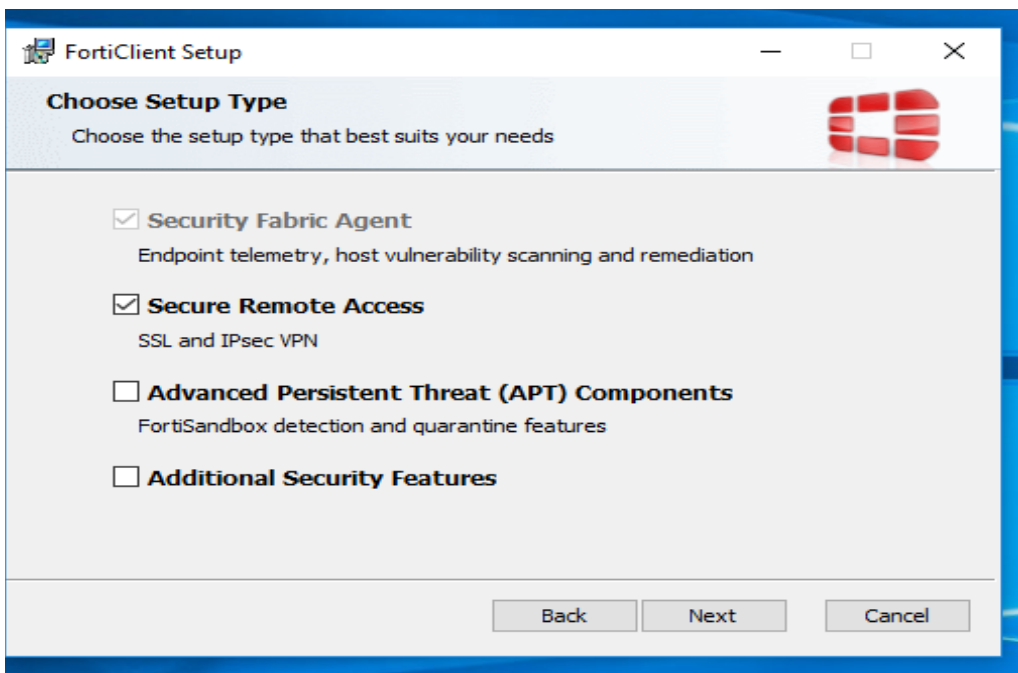
Please be patient...it could take several minutes before the progress bar even moves



5. The setup wizard window will appear. Check the box and click Next



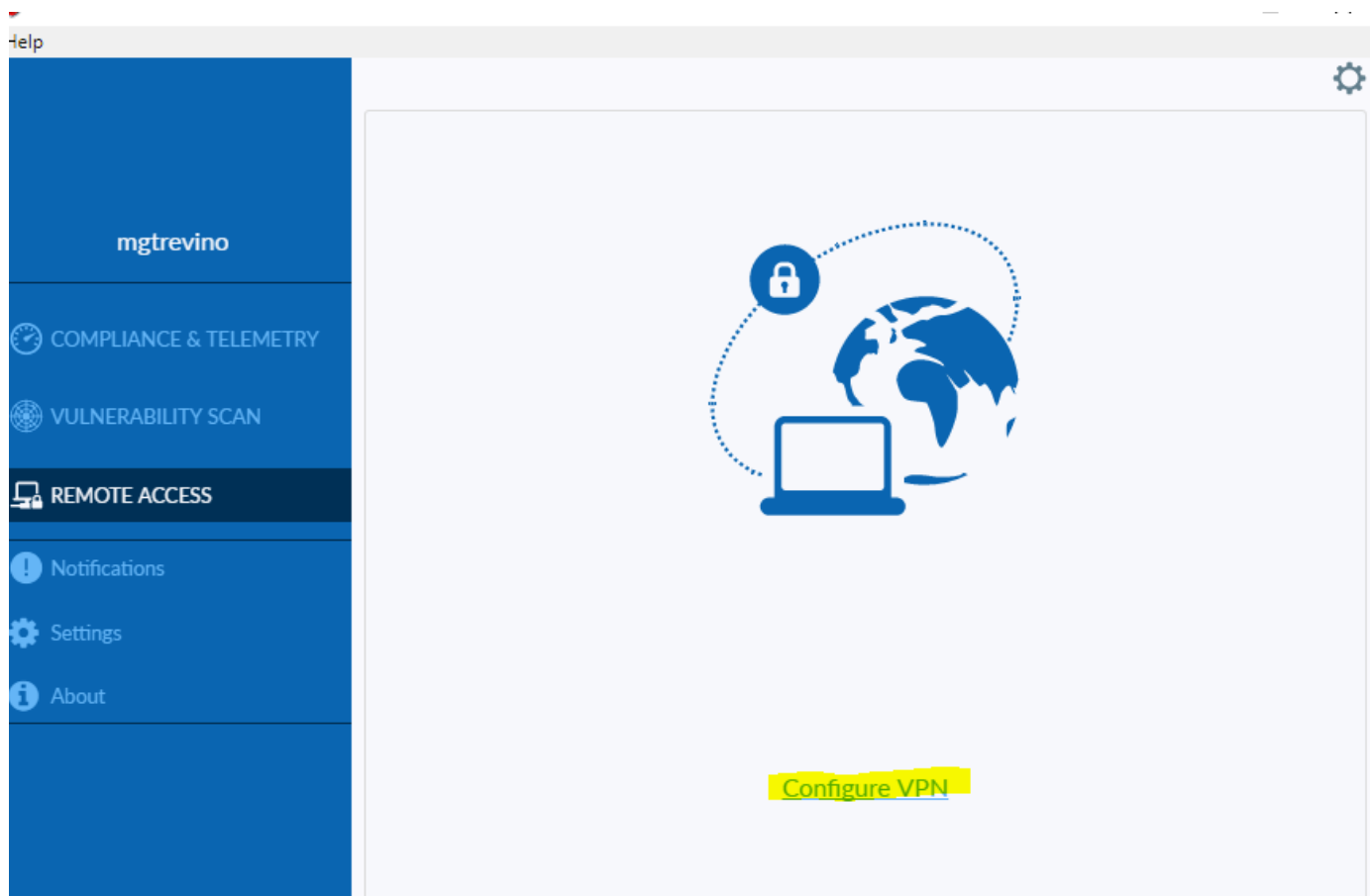
6. Accept default setup type as shown and click next.



7. Accept the default Destination Folder
8. Click Install
9. When completed, click Finish.

Configuration

1. Launch the FortiClient (orange shield icon on your Desktop)
2. Select the **Remote Access** tab on the left
3. Click the **Configure VPN** link in the middle of the window



4. Make sure the **SSL-VPN** button is selected at the top of the window and fill in the fields as shown
Connection Name: **SWTJC**
Remote Gateway: **swtjc-fw01.swtjc.edu** or **70.241.208.90**
Username: **Put your Username**
*Choose Save login and check do not warn Invalid Server Certificate box.

The screenshot shows the FortiClient application window with the 'New VPN Connection' dialog open. The left sidebar contains navigation options: 'mgtrevino', 'COMPLIANCE & TELEMETRY', 'VULNERABILITY SCAN', 'REMOTE ACCESS', 'Notifications', 'Settings', and 'About'. The main dialog area is titled 'New VPN Connection' and has two tabs: 'SSL-VPN' (selected) and 'IPsec VPN'. The fields are as follows:

Field	Value
VPN	SSL-VPN
Connection Name	SWTJC
Description	
Remote Gateway	70.241.208.90
Client Certificate	None
Authentication	Save login
Username	mgtrevino
Do not Warn Invalid Server Certificate	Checked

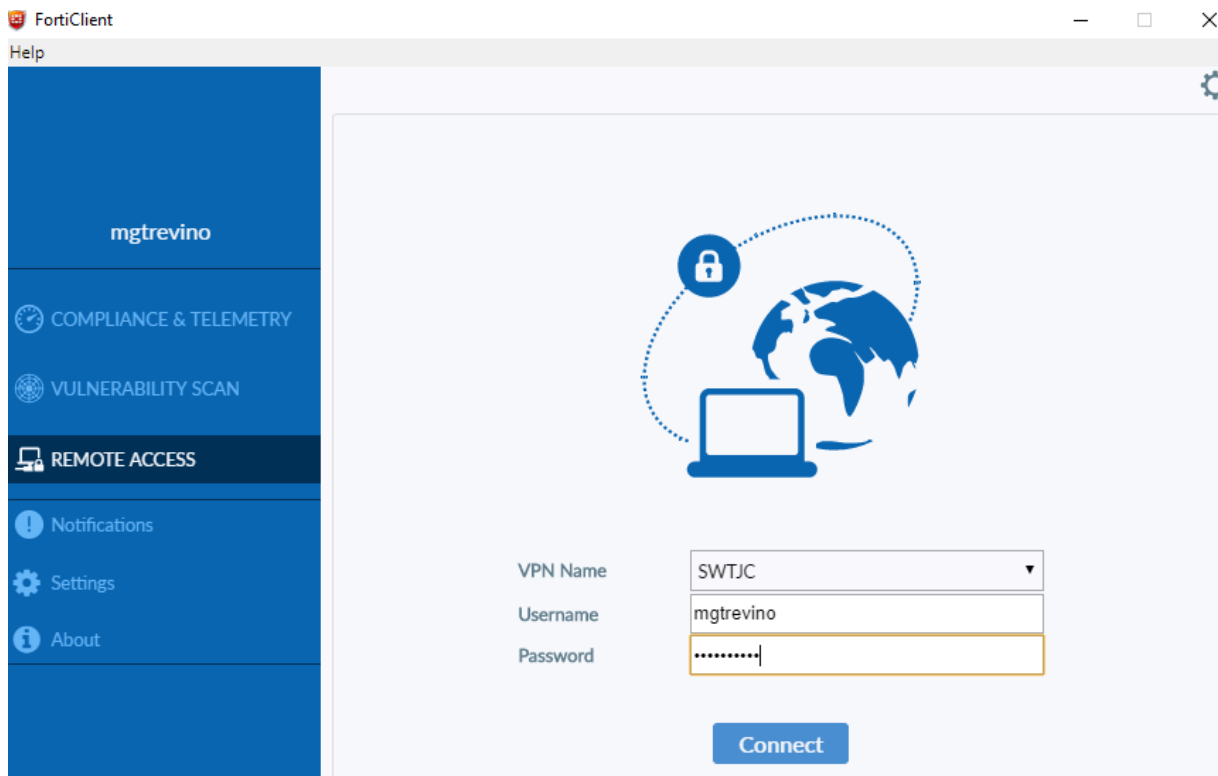
Buttons: Cancel, Save

5. Click Save

Connecting to the VPN

Method 1:

1. Use the FortiClient icon on your Desktop to open the FortiClient Console
2. **SWTJC**, the connection just created should already be selected for the connection



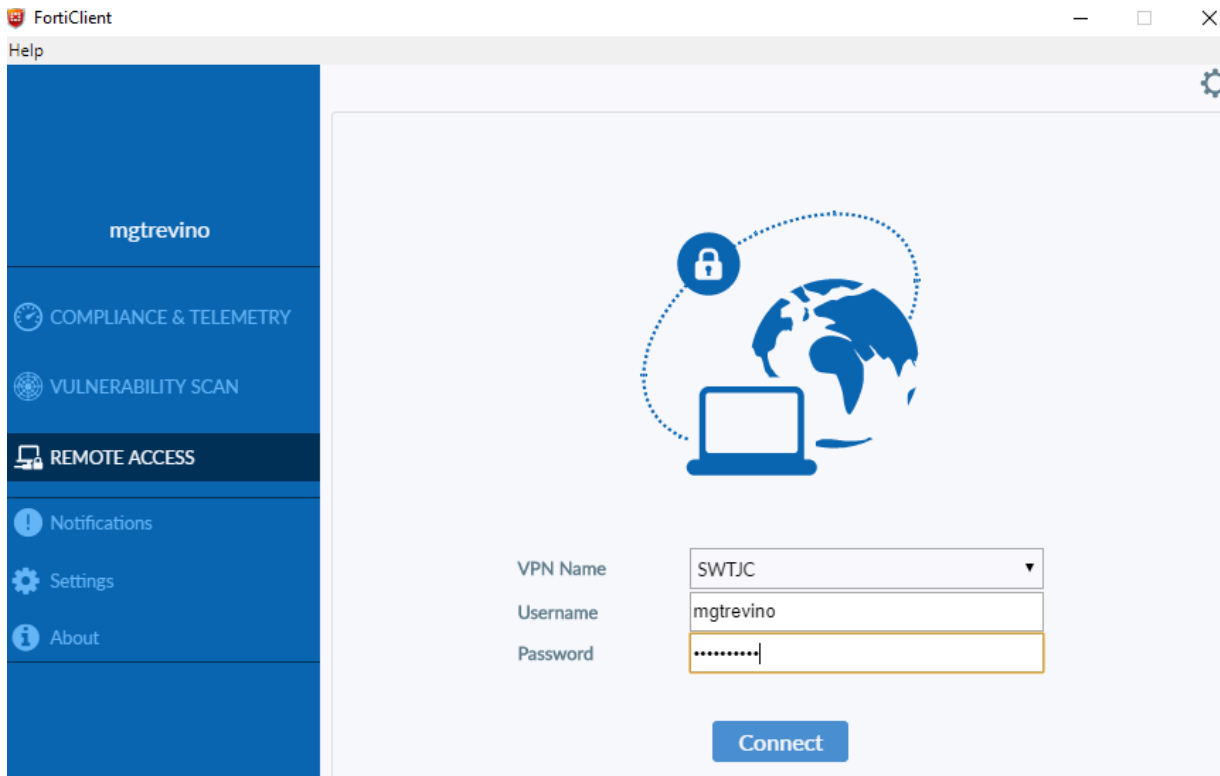
3. Enter your SWTJC login ID if not filled already and password
4. Click Connect
5. Once connected, the Connect button will change to Disconnect and window will disappear.

Method 2:

1. Right-click on the green FortiClient shield icon in your system tray and select **Connect to SWTJC**



2. Enter your SWTJC login ID and password
3. Click Connect



Disconnecting from the VPN

Method 1:

- ▮ Use the FortiClient icon on your Desktop to open the FortiClient Console and click Remote Access
- ▮ Click Disconnect

Method 2:

- ▮ Right-click on the green FortiClient shield icon in your system tray and select **Disconnect SWTJC**

Method 3:

- ▮ Put your computer into Standby/Sleep mode or power it off